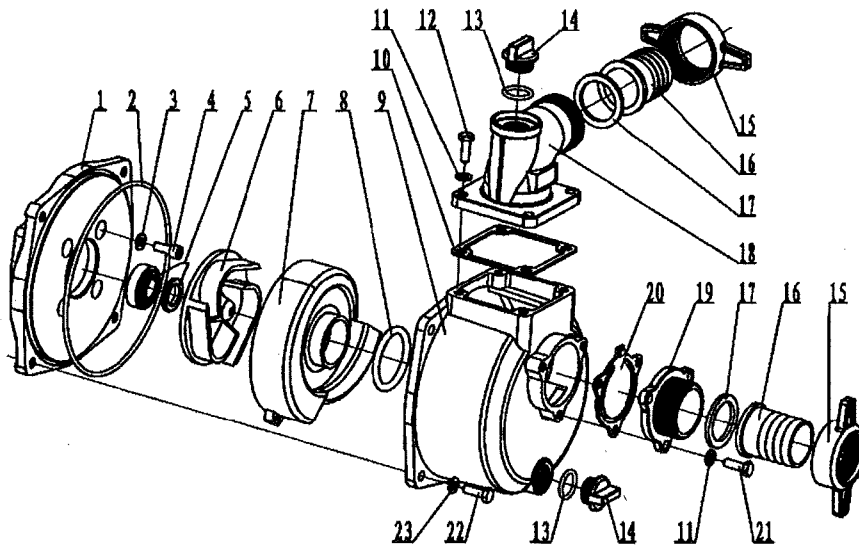


**KM0404152/1.5" ROUND PUMP SKETCH MAP**



| NO. | Name                      | Material | Quantity | NO. | Name                     | Material | Quantity |
|-----|---------------------------|----------|----------|-----|--------------------------|----------|----------|
| 1   | Pump cover                | ZL102    | 1        | 13  | O ring<br>18x3.1         | NBR      | 2        |
| 2   | O ring<br>160x4           | NBR      | 1        | 14  | Whorl Plug               | ABS      | 2        |
| 3   | Sealed washer             | PA       | 4        | 15  | Spanner                  | ABS      | 2        |
| 4   | Hexangular bolt<br>M5x45* | Q235     | 4        | 16  | Pipe                     | ABS      | 2        |
| 5   | Mechanical seal           |          | 1        | 17  | sealed washer            | NBR      | 2        |
| 6   | Impeller                  | HT150    | 1        | 18  | Outlet flange            | ZL102    | 1        |
| 7   | Diffuser                  | ZL102    | 1        | 19  | Inlet flange             | ZL102    | 1        |
| 8   | O ring<br>41x3.55         | NBR      | 1        | 20  | Check valve              | NBR      | 1        |
| 9   | Pump body                 | ZL102    | 1        | 21  | Hexangular bolt<br>M6x18 | Q235     | 3-4      |
| 10  | Outlet's sealed<br>washer | NBR      | 1        | 22  | Hexangular bolt<br>M8x20 | Q235     | 4        |
| 11  | Washer                    | Q235     | 7-8      | 23  | Washer                   | Q235     | 4        |
| 12  | Hexangular bolt<br>M6x18  | Q235     | 4        |     |                          |          |          |

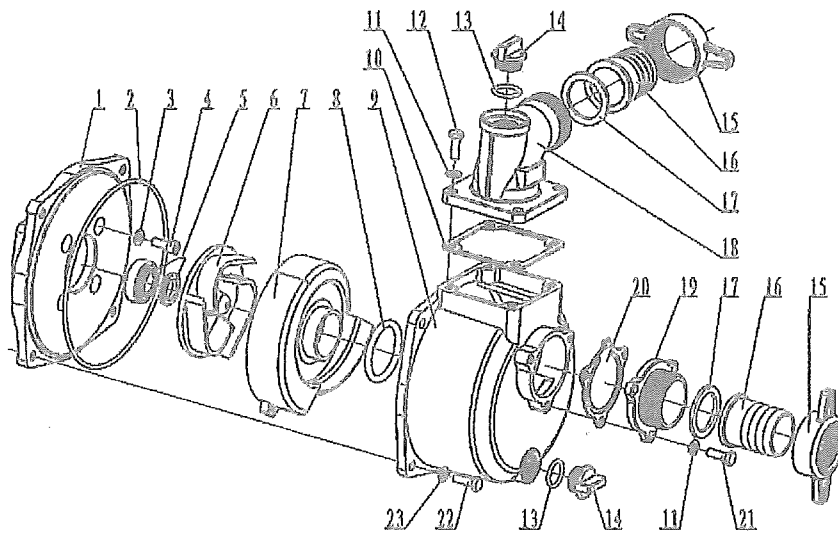
KM0404152P-2

KM0404152P-5  
-6

-9

KM0404152P-14

*KM0404152/1.5" ROUND PUMP SKETCH MAP*



| NO. | Name                      | Material | Quantity | NO. | Name                     | Material | Quantity |
|-----|---------------------------|----------|----------|-----|--------------------------|----------|----------|
| 1   | Pump cover                | ZL102    | 1        | 13  | O ring<br>18x3.1         | NBR      | 2        |
| 2   | O ring<br>160x4           | NBR      | 1        | 14  | Whorl Plug               | ABS      | 2        |
| 3   | Sealed washer             | PA       | 4        | 15  | Spanner                  | ABS      | 2        |
| 4   | Hexangular bolt<br>M5x45* | Q235     | 4        | 16  | Pipe                     | ABS      | 2        |
| 5   | Mechanical seal           |          | 1        | 17  | sealed washer            | NBR      | 2        |
| 6   | Impeller                  | HT150    | 1        | 18  | Outlet flange            | ZL102    | 1        |
| 7   | Diffuser                  | ZL102    | 1        | 19  | Inlet flange             | ZL102    | 1        |
| 8   | O ring<br>41x3.55         | NBR      | 1        | 20  | Check valve              | NBR      | 1        |
| 9   | Pump body                 | ZL102    | 1        | 21  | Hexangular bolt<br>M6x18 | Q235     | 3-4      |
| 10  | Outlet's sealed<br>washer | NBR      | 1        | 22  | Hexangular bolt<br>M8x20 | Q235     | 4        |
| 11  | Washer                    | Q235     | 7-8      | 23  | Washer                   | Q235     | 4        |
| 12  | Hexangular bolt<br>M6x18  | Q235     | 4        |     |                          |          |          |

